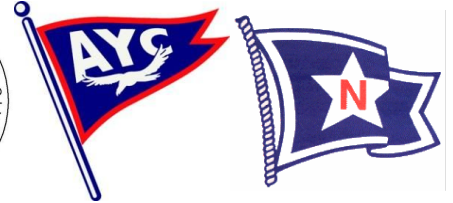


# Sailing Instructions

## ABYRA Night Race Saturday, June 23, 2018



### 1 RULES

This race will be governed by the rules as defined in *The Racing Rules of Sailing* (RRS) and as modified by the 2018 Anchor Bay Yacht Racing Association (ABYRA) Handbook, this race's Notice of Race, and these Sailing Instructions.

### 2 NOTICES TO COMPETITORS

ABYRA 2 is unchanged.

### 3 CHANGES TO SAILING INSTRUCTIONS

ABYRA 3 is unchanged.

### 4 SIGNALS MADE ASHORE

ABYRA 4 is unchanged.

### 5 SCHEDULE

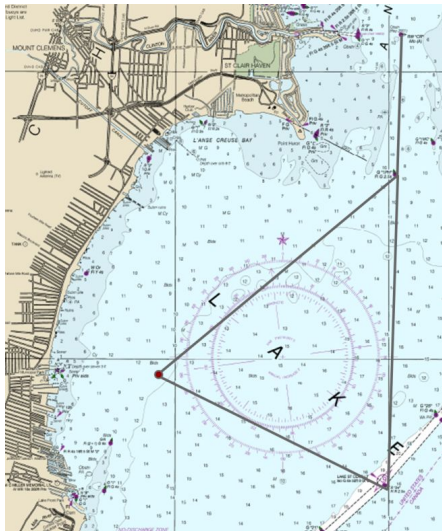
The warning signal for the first start is scheduled for 1900 on Saturday, June 23, 2018. A sequence alert, consisting of four or more sounds, may be sounded one minute ahead of the warning signal. The absence of a sequence alert shall be disregarded.

### 6 CLASSES AND RATINGS

- ABYRA 6 is unchanged.
- NSSC 6.5 does not apply.

### 7 RACING AREA

The racing area will be northern Lake St. Clair, including southern Anchor Bay. One of two courses will be used. The chart shows the approximate race area.



### 8 COURSES

Courses begin at government buoy CR and head south from CR, using government buoys CR, 1PH, St. Clair Light, and LSSC buoy L. The course will be announced on the water by the race committee with the appropriate signal shape.

# Sailing Instructions

The following table describes the courses, including the signal shape, the order in which marks are to be passed, and the side on which each mark is to be left.

Signal Shapes	Course	Marks (indicating marks left to port or starboard)
(red)	Red	Start—1PH (stbd)—LSSC L (port)—St. Clair Light (port)—Finish
(green)	Green	Start—St. Clair Light (stbd)—LSSC L (stbd)—1PH (port)—Finish

## 9 MARKS

The following table describes the approximate position of each mark.

Course Marks		
CR	42° 35.64'	82° 44.72'
1PH	42° 33.21'	82° 44.86'
St. Clair Light	42° 27.92'	82° 45.26'
LSSC L	42° 29.81'	82° 50.62'

## 10 THE START

- RRS 26 is unchanged.
- ABYRA 10.4 is unchanged.
- ABYRA 10.5 is unchanged.
- RRS 27.3 is unchanged.
- ABYRA 10.7 is unchanged.
- ABYRA 10.8 is unchanged.

## 11 SHORTENING OR ABANDONMENT AFTER THE START

ABYRA 11 is unchanged.

## 12 THE FINISH

The race will finish between committee boat RC flag and government buoy CR.

## 13 TIME LIMIT

The time limit shall be six hours after a class start. If one boat sails the course and finishes within the time limit, all boats in that class that finish within two hours of the first boat's finish shall be scored according to their finishing places, unless the race is abandoned. Boats that finish two hours or more after the first boat in that class finished will be scored Time Limit Expired (TLE) – the boat's score will be the number of competitors in the starting area plus 1.

## 14 PROTESTS AND REQUESTS FOR REDRESS

ABYRA 14 is unchanged.